

# STOP BAMBIT!

PRINT & PLAY



COUNCIL OF EUROPE



CONSEIL DE L'EUROPE

EYF

europaean youth foundation  
fonds européen pour la jeunesse



Co-funded by the  
Erasmus+ Programme  
of the European Union

International  
Young Naturefriends



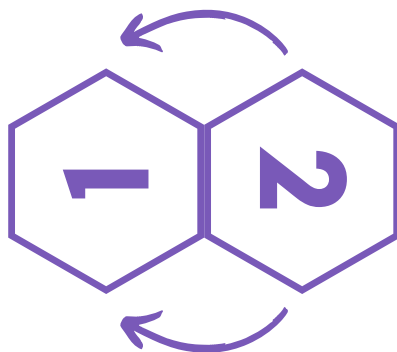
Welcome to the print & play version of our game  
**"STOP BAMBIT!"**

This document contains all the cards necessary to play, the game board, hexagon blocks, as well as the instructions.

We suggest that you print the cards (pages 4-11) on **both sides** of of the paper so that the front and the back would match. For the hexagon blocks (pages 12 to 21), print each page on a **separate sheet** since both sides are arranged on the same page, next to each other and connected.

Cut them out together, fold the side that connects them and glue them to get a two-sided block. One side should be positive, and one negative, eg: good water-polluted water.

Use this model as a reference:



Co-funded by the  
Erasmus+ Programme  
of the European Union



International  
Young Naturefriends 

The pages of the board (22-25) should be printed on a **separate sheet each** and arranged in this manner:

22	23
24	25

You should have 4 sheets for the game board, 8 hard question cards, 8 medium question cards, 8 easy question cards, 4 Babbit power cards, 6 token cards, 8 water hexagons, 7 forest hexagons, 5 city hexagons.

Save as much paper as you can!  
Do not print these pages and the instructions.

Thank you :)

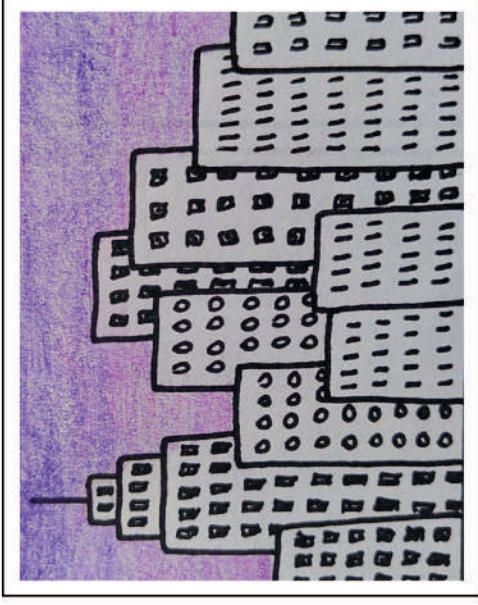
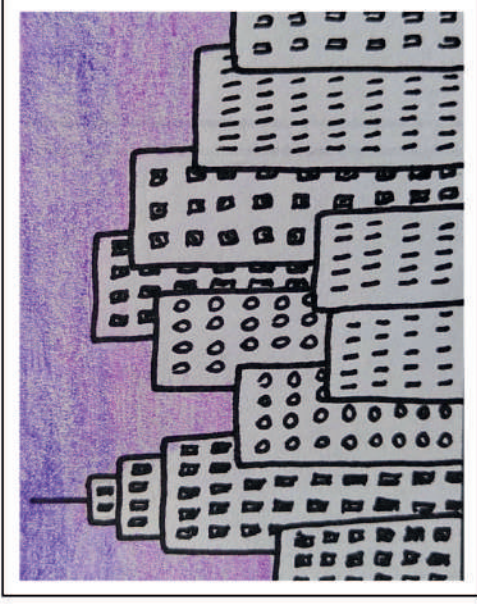
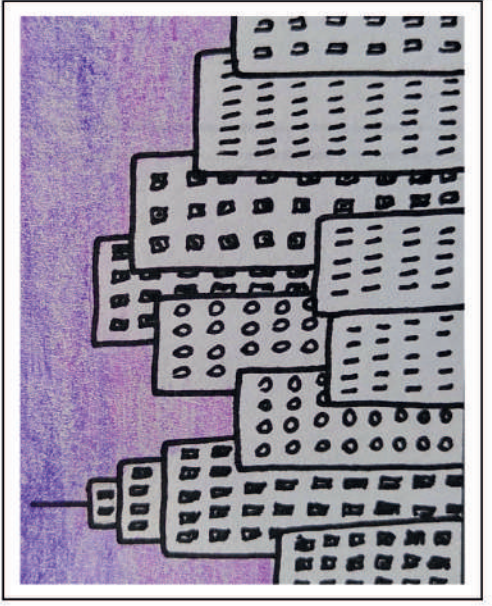
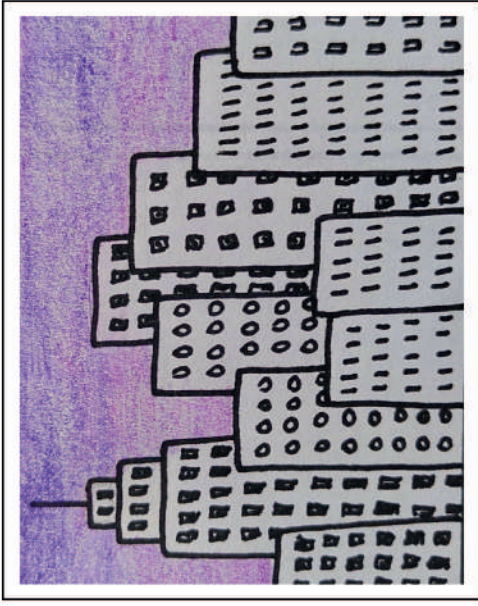
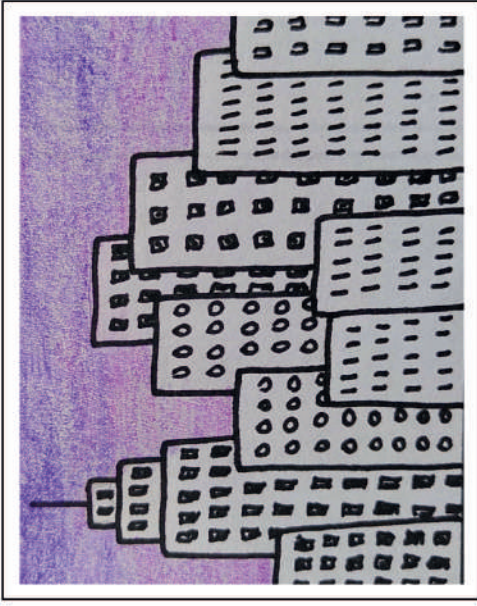
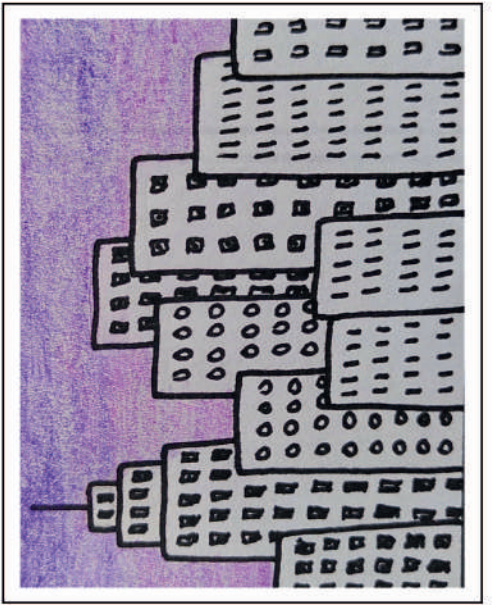
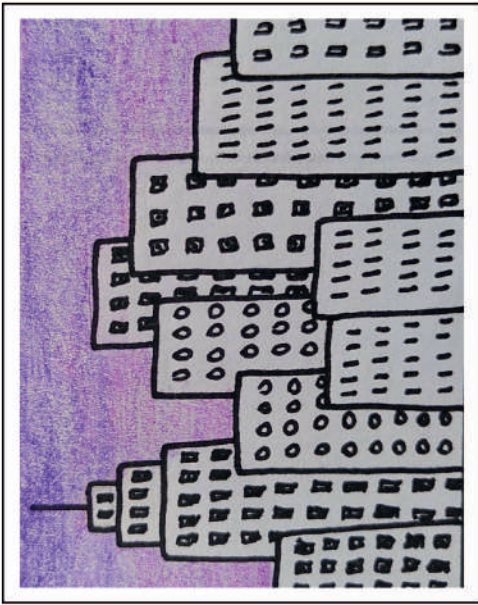
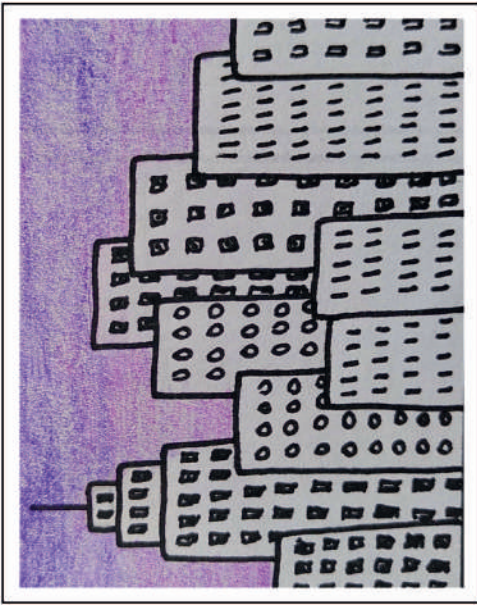
- The Creators of the game  
and the IYNF team



Co-funded by the  
Erasmus+ Programme  
of the European Union



International  
Young Naturefriends 



Co-funded by the  
Erasmus+ Programme  
of the European Union



International  
Young Naturefriends



TOP 1% EARNER OF THE WORLD EMITS  
CO2 PER PERSON ----- HIGHER THAN  
THE BOTTOM 50% EARNER OF THE  
WORLD.

- A: 45 TIMES
- B: 60 TIMES
- C: 75 TIMES

IN WHICH YEAR DID THE CATASTROPHE  
OF THE TEXTILE INDUSTRY HAPPEN IN  
BANGLADESH?

- A: 2013
- B: 2002
- C: 1995

LATIN AMERICANS ARE EXPOSED TO  
----- MORE POLLUTION THAN THEY  
PRODUCE.

- A: 45 %
- B: 63 %
- C: 70 %

## TIME EXTENSION

WHAT PERCENTAGE OF WETLANDS HAVE  
WE LOST GLOBALLY TO LAND  
DEGRADATION SINCE 1900?

- A: 60%
- B: 75%
- C: 87%

25% OF THE WORLD'S FRESHWATER  
SUPPLY IS USED TO GROW FOOD THAT  
IS NEVER EATEN. WHICH COUNTRY IS  
WASTING THE MOST FOOD?

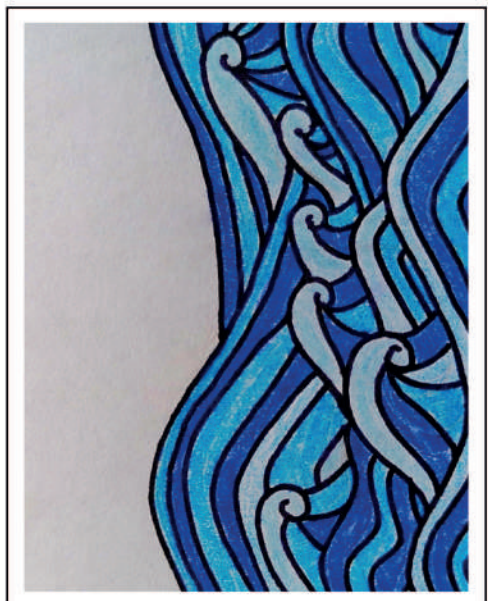
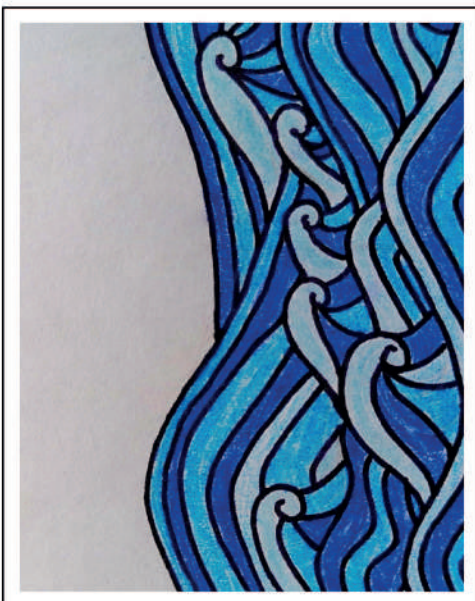
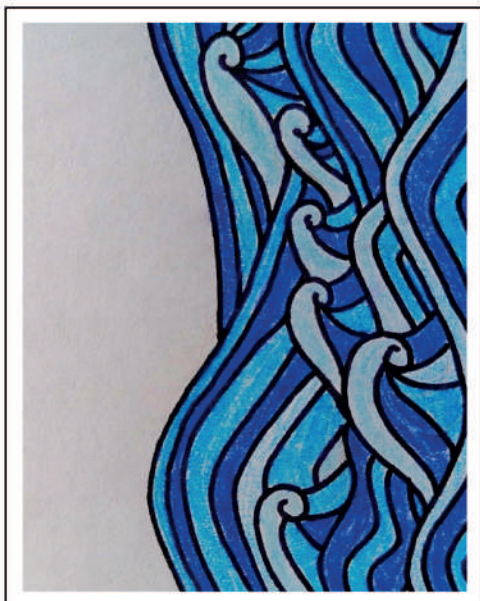
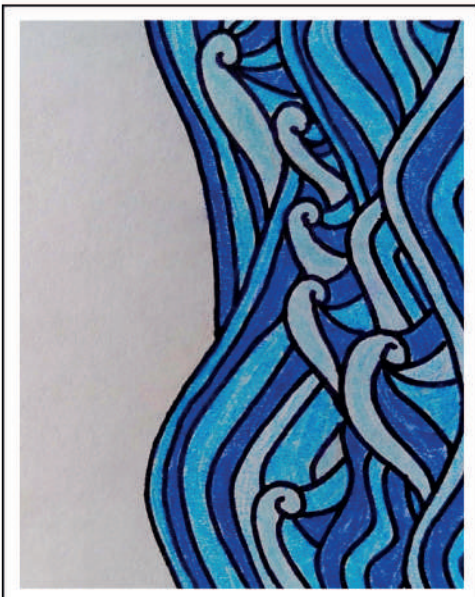
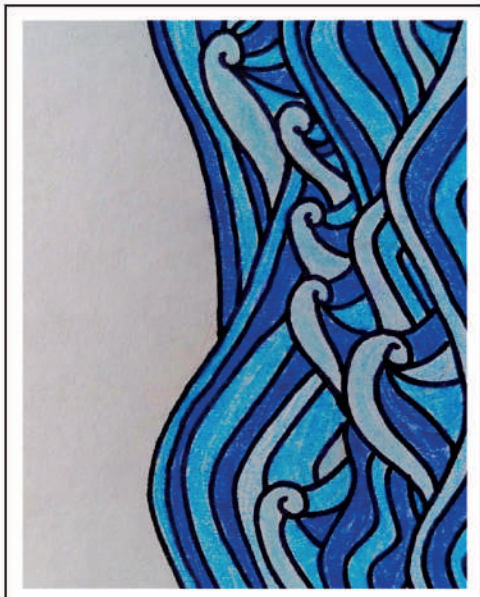
- A: GERMANY
- B: US
- C: TURKEY

MORE THAN HALF MILLION PEOPLE DIE  
IN A YEAR DUE TO THE CLIMATE CRISIS.  
HOW MANY OF THEM ARE FROM  
DEVELOPING COUNTRIES?

- A: 95 %
- B: 70 %
- C: 45 %

## TOKEN





Co-funded by the  
Erasmus+ Programme  
of the European Union



International  
Young Naturefriends

SWITCH AN  
EASY QUESTION  
TO A HARD  
QUESTION.

TURN A GREEN  
PIECE INTO A  
WASTE PIECE.

REDUCE THE  
ANSWERING  
TIME (10  
SECONDS).

LIMIT THE  
PLAYERS'  
ABILITY TO  
HELP EACH  
OTHER.

THERE WAS NO FLOOR MADE OF  
ILLEGAL WOODS.

A: TRUE  
B: FALSE

THE AVERAGE INCOME OF RESIDENTS  
LIVING WITHIN TREE MILES OF A COAL  
POWER PLANT IN 2000 WAS OVER  
\$1000 LESS THAN THE NATIONAL\*  
AVERAGE.

A: TRUE  
B: FALSE  
\*USA ONLY

CATTLE PASTURES OCCUPY 80% OF  
THE DEFORESTED AREAS IN THE  
AMAZON.

A: TRUE  
B: FALSE

A WASTE PIECE INTO A  
GREEN PIECE

THE NETHERLANDS AND BANGLADESH  
COULD DISAPPEAR DUE TO SEA LEVEL  
RISE BY 2100.

A: TRUE  
B: FALSE

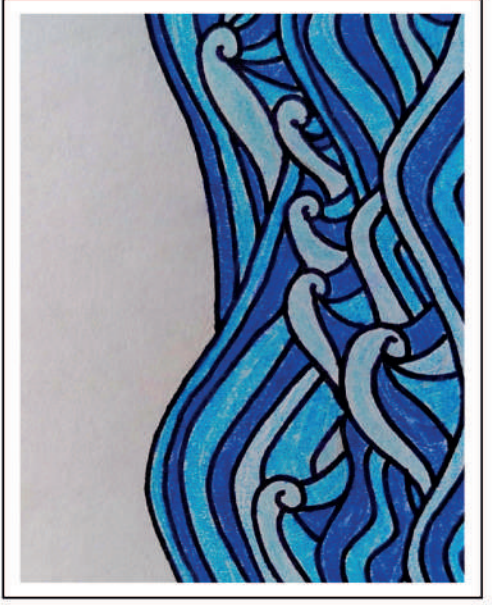
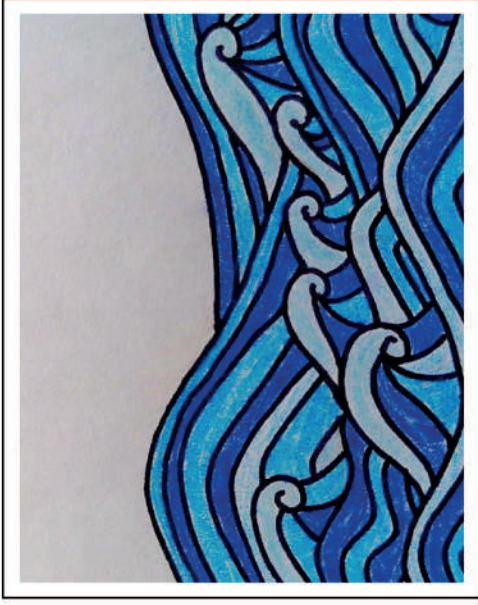
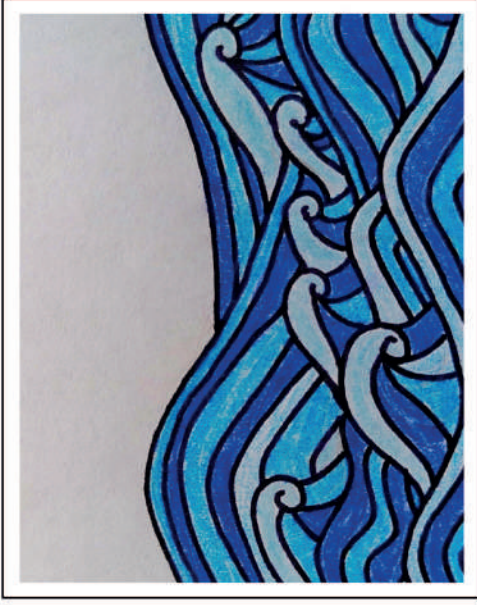


Co-funded by the  
Erasmus+ Programme  
of the European Union



International  
Young Naturefriends





Co-funded by the  
Erasmus+ Programme  
of the European Union



International  
Young Naturefriends





**TOKEN**

**TOKEN**

**TOKEN**

**TOKEN**

**TOKEN**

**TOKEN**

**TOKEN**

**CHINA WAS THE LARGEST RECIPIENT OF  
WASTE EXPORT FROM EUROPEAN  
COUNTRIES IN 2018.**

**A: TRUE  
B: FALSE**

**PEOPLE WHO LIVE IN AMERICA  
BREATHE THE SAME QUALITY OF AIR**

**A: TRUE  
B: FALSE**



Co-funded by the  
Erasmus+ Programme  
of the European Union



International  
Young Naturefriends 



Co-funded by the  
Erasmus+ Programme  
of the European Union



International  
Young Naturefriends 

## NEW BEGINNING

EVERY ----- SECONDS, WE LOSE A FOOTBALL PITCH WORTH OF TROPICAL RAINFOREST?

- A: 3
- B: 6
- C: 9

WHICH ONE OF THESE IS ONE OF THE MOST GLOBAL AIR POLLUTED COUNTRIES?

- A: QATAR
- B: PAKISTAN
- C: CHINA

THE HUNGER IS ----- TIMES LOWER IN EUROPE THAN IN AFRICA.

- A: 2 TIMES
- B: 4 TIMES
- C: 7 TIMES

OUT OF THE TOP 20 CITIES RANKED IN TERMS OF POPULATION AMOUNT EXPOSED TO COASTAL FLOODING IN THE NEXT 50 YEARS, HOW MANY OF THEM ARE ASIAN CITIES?

- A: 9 CITIES
- B: 12 CITIES
- C: 15 CITIES

WHAT PERCENTAGE OF ALL HUMAN-CAUSED GREENHOUSE GAS EMISSIONS COULD BE REDUCED IF WE STOPPED WASTING FOOD?

- A: 2%
- B: 6%-8%
- C: 15%

## A WASTE PIECE INTO A GREEN PIECE

HOW MANY PERCENT OF ALL GLOBAL GREENHOUSE EMISSIONS CAUSED BY HUMANS ARE DUE TO DEFORESTATION?

- A: 33%
- B: 22%
- C: 11%



Co-funded by the  
Erasmus+ Programme  
of the European Union



International  
Young Naturefriends





Co-funded by the  
Erasmus+ Programme  
of the European Union



International  
Young Naturefriends 

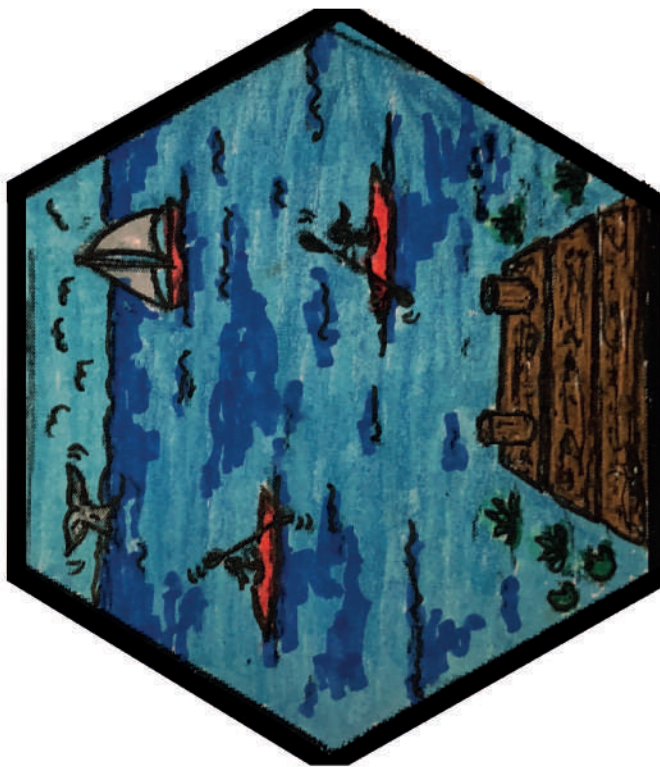
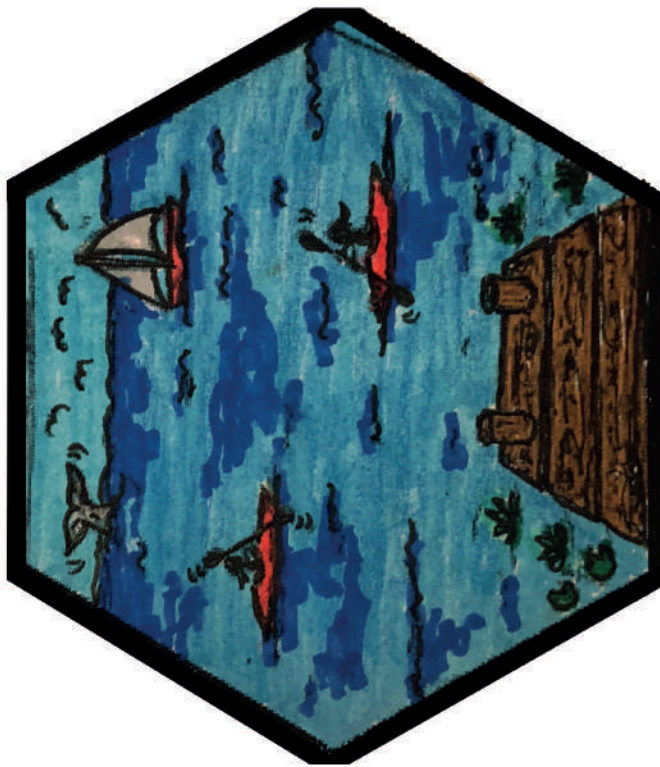


Co-funded by the  
Erasmus+ Programme  
of the European Union



International  
Young Naturefriends





Co-funded by the  
Erasmus+ Programme  
of the European Union



International  
Young Naturefriends

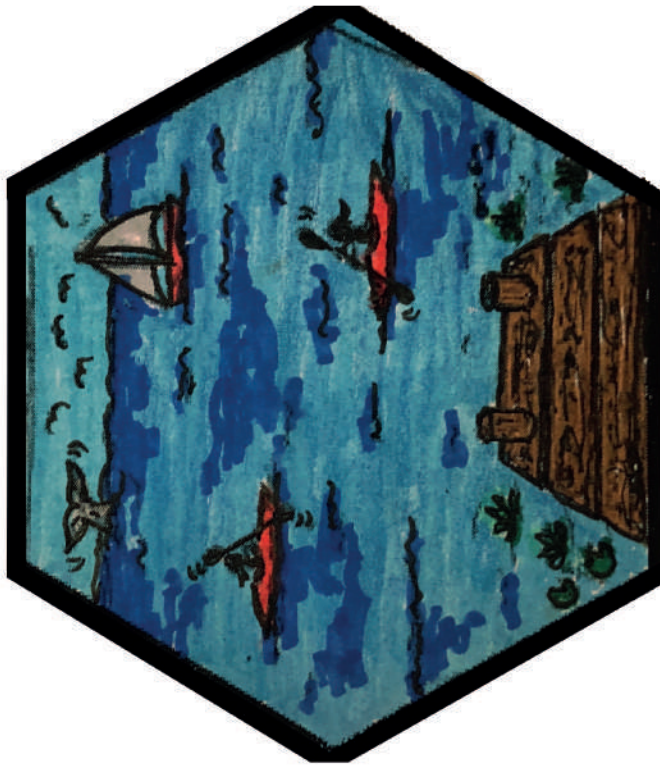
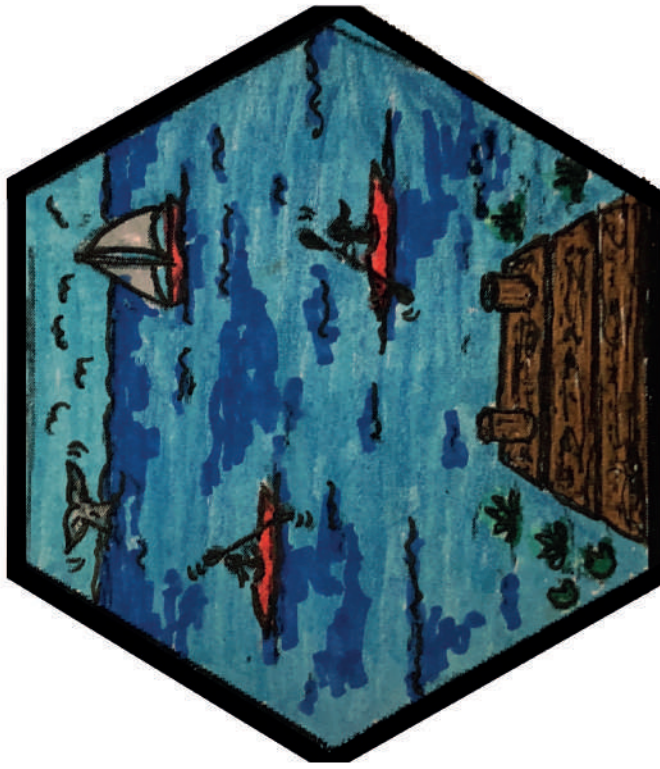




Co-funded by the  
Erasmus+ Programme  
of the European Union



International  
Young Naturefriends 



Co-funded by the  
Erasmus+ Programme  
of the European Union



International  
Young Naturefriends 





Co-funded by the  
Erasmus+ Programme  
of the European Union



International  
Young Naturefriends 



Co-funded by the  
Erasmus+ Programme  
of the European Union



International  
Young Naturefriends





Co-funded by the  
Erasmus+ Programme  
of the European Union



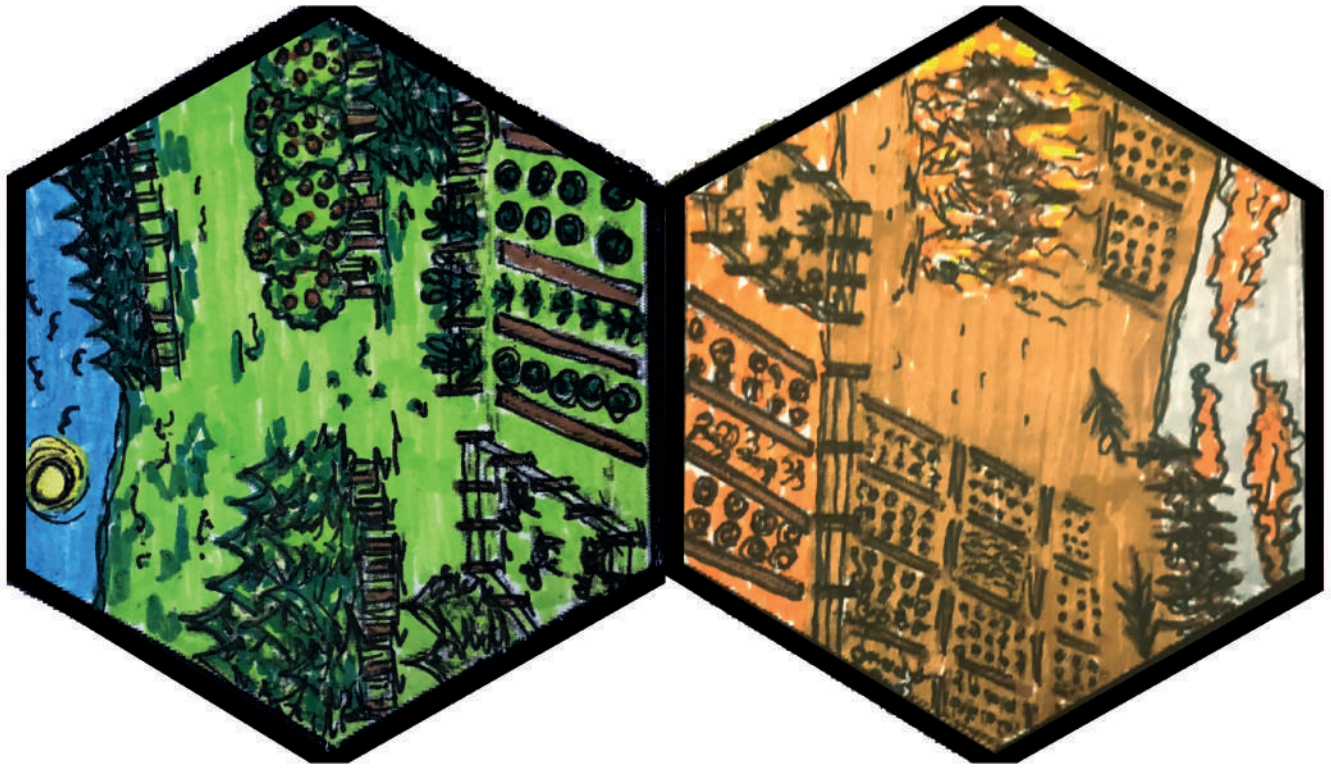
International  
Young Naturefriends 



Co-funded by the  
Erasmus+ Programme  
of the European Union



International  
Young Naturefriends 



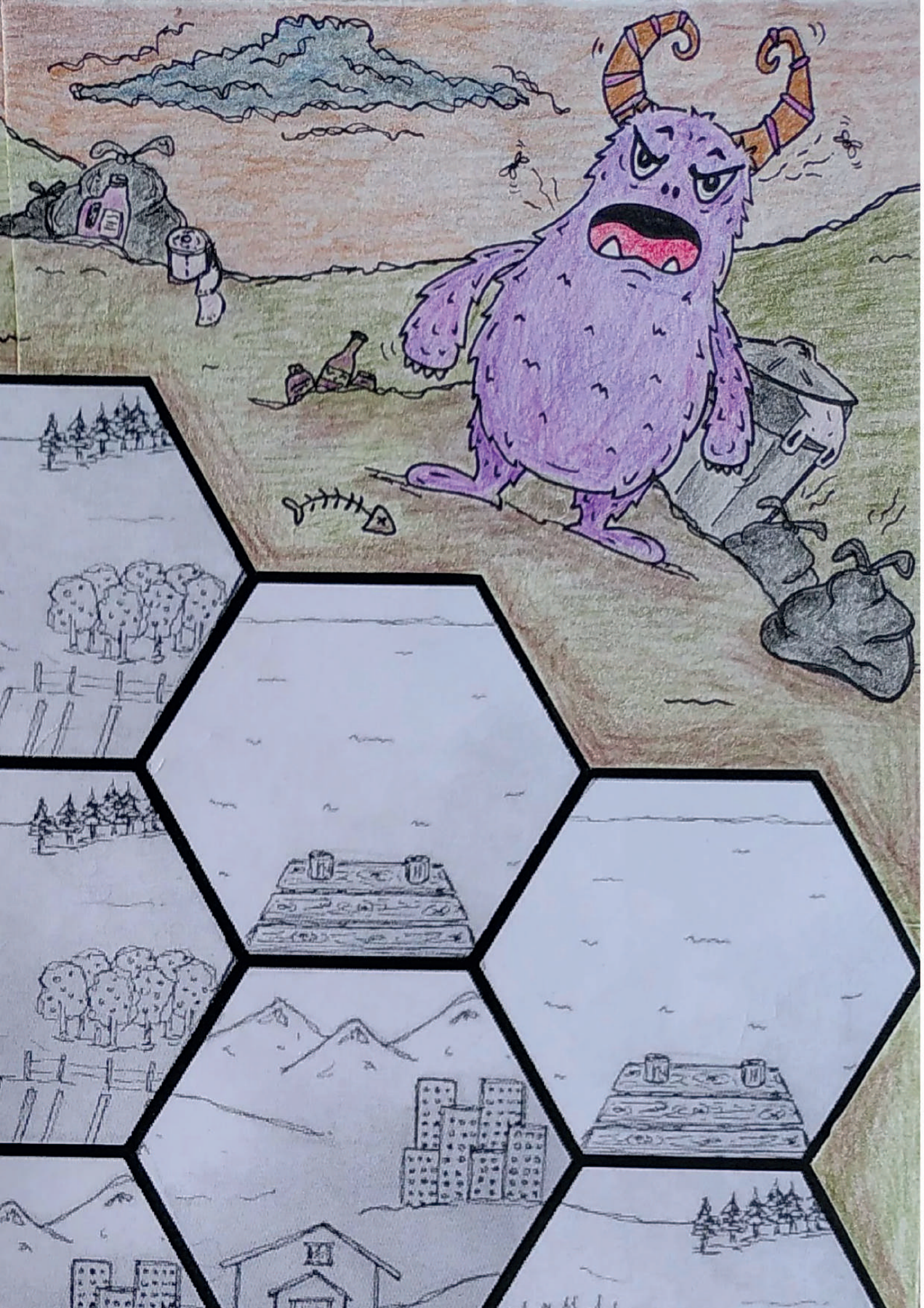
Co-funded by the  
Erasmus+ Programme  
of the European Union



International  
Young Naturefriends 

**STOP  
BAMBIT!**







## THE EVIL AGENTS

(0 - 4 green blocks)

The year is now 2050. The world as we know ceased to exist. Also, there is a polar bear living in your fridge because the ice sheets have melted completely.

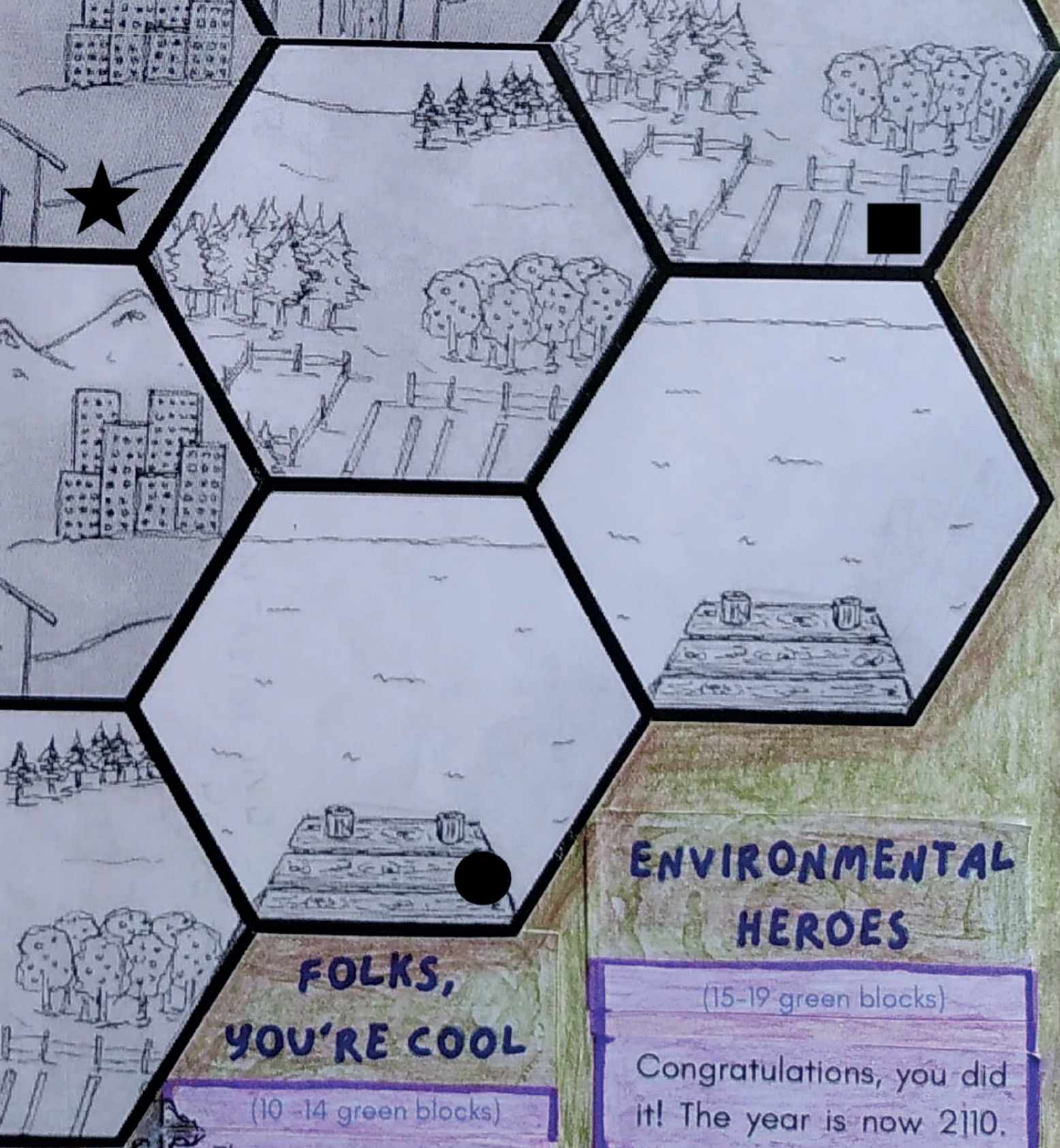
## GRETA IS DISAPPOINTED

(5 - 9 green blocks)

The year is now 2070. We still have to use a mask when we go out, but now it's because of the air pollution.







## FOLKS, YOU'RE COOL

(10 -14 green blocks)

The year is now 2090. A normal day at school. You have some veggies in your lunchbox and you are also allowed to take a shower twice a week.

## ENVIRONMENTAL HEROES

(15-19 green blocks)

Congratulations, you did it! The year is now 2110. We ride around town on bikes and electric buses, have picnics in clean parks and keep food in the fridge instead of polar bears. Seriously, it's all rainbows and unicorns...

# STOP BAMBIT !

## INSTRUCTIONS

Duration: 30 minutes

Players: 3 to 5

Age: 14+

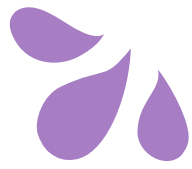
## GAME RULES

1. The game starts with a blank board and decks of trivia cards divided into three difficulty levels.
2. Each player chooses a token. Each token gives a different character to the players. Based on their tokens, they start the game at different points on a board.
3. Each player gets to answer one trivia card within a specific time limit.
4. The token is used for helping other players to answer their questions during the game.
5. A player puts the green piece on the board if he/she answers correctly.
6. A player puts the waste piece on the board if he/she answers incorrectly.
7. If a player gets a special card at their turn, they get the benefit of the special card AND they also draw another question card and answer the question.
8. Players go in order.
9. Bambit gets to use four power cards throughout the whole game. The power cards will appear at different locations on the board.
10. The game finishes when a team completes the board with all 19 pieces.
11. LAST CHANCE: If players are still left with a token(s) after they finish completing the board, they can use it to turn a waste piece into a green piece.

## GAME COMPONENTS

**Board:** 19 pieces with different landscapes at both sides: A green side or A waste side

**Tokens (6)** - Each participant starts with one token. There are two more hidden in the trivia cards. Each token lets you help another participant to answer their question.



**Characters:** Each character has a different starting position on the board.

- Business person ★
- Farmer ▲
- Environmentalist ●
- Indigenous person ■

### **Trivia cards (24):**

- 8 City (Hard questions)
- 8 Forest (Moderate questions)
- 8 Water (Easy questions)

### **Special cards (6):**

They are hidden in the trivia cards. Their action lasts through the round when they were drawn from the deck.

- 2 tokens
- 1 new beginning
- 2 turning cards: A waste piece into a green piece
- 1 time extension

### **Bambit Power Cards (4):**

The four pieces of the board have a purple frame. When these pieces are chosen, the bambit can do the following actions one by one.

- 1 turning power: Turn a green piece into a waste piece
- 1 switching power: Switch an easy question to a hard question.
- 1 time limiting power: Reduce the answering time (10 seconds)
- 1 "tokening" power: Limit the players' ability to help each other. For example, players only can help with mimics and movements with each other instead of directly telling the correct answers.



# THE INDEX MEASURE

## THE EVIL AGENTS

(0 - 4 green blocks)

The year is now 2050. The world as we know ceased to exist. Also, there is a polar bear living in your fridge because the ice sheets have melted completely.

## FOLKS, YOU'RE COOL

(10 -14 green blocks)

The year is now 2090. A normal day at school. You have some veggies in your lunchbox and you are also allowed to take a shower twice a week.

## GRETA IS DISAPPOINTED

5 - 9 green blocks)

The year is now 2070. We still have to use a mask when we go out, but now it's because of the air pollution.

## ENVIRONMENTAL HEROES

(15-19 green blocks)

Congratulations, you did it! The year is now 2110. We ride around town on bikes and electric buses, have picnics in clean parks and keep food in the fridge instead of polar bears. Seriously, it's all rainbows and unicorns...